

# VLAN Vision Option for OptiView™ Analyzers

**Fluke Networks new VLAN Vision Option provides enhanced support of VLANs and multiple segments for your OptiView Integrated Network Analyzer or OptiView Workgroup Analyzer.**

*Perhaps the single most important thing in keeping a VLAN network healthy is good documentation. Remember that with VLANs, the logical view of the network – what subnets there are and how they are connected together – can be completely separated from the physical view of the network – which devices are connected where and which ports on a switch belong to which VLAN. A good physical map of how the switches are interconnected and where the trunk links are, will greatly improve troubleshooting. The OptiView VLAN Vision Option allows you to perform:*

- *Discovery of VLANs including VLAN identity, name and VTP domain as well as identifying member switches and member ports*
- *Discovery of devices on VLANs including IP, IPX addresses, DNS, Netware and NetBIOS names, together with switch and port information for each individual device*
- *Identification of critical configuration such as Trunk configuration mismatch, protocol and duplex problems*

Virtual LAN (VLAN) technology has been available for sometime and with the introduction and widespread adoption of the IEEE 802.1q standard, it is now possible to mix and match switches from various vendors into a single, cohesive network.

The essential premise of a VLAN network is to divide a switched network into effectively isolated networks and then to reconnect them in a controlled manner with routers. This takes advantage of the benefits of routers in terms of broadcast and access control together with layer 3 address management. Additionally, VLAN configuration is performed entirely through the switch management system allowing the network to be redesigned without the need to move cables and equipment.

However, this is where the problem starts – Are compatible trunk protocols configured? Which switch ports are assigned to which VLANs? What devices are connected to which switch ports? The Fluke Networks OptiView VLAN Vision Option now gives you the answers to all these questions.

When the OptiView Analyzer is connected to the network, it automatically begins its advanced discovery process. With the VLAN Vision option enabled, the analyzer will also query switches for VLAN information. When a switch is selected from the Device Discovery screen and the Host Detail key is pressed, the analyzer will provide you with summary information for the selected switch.

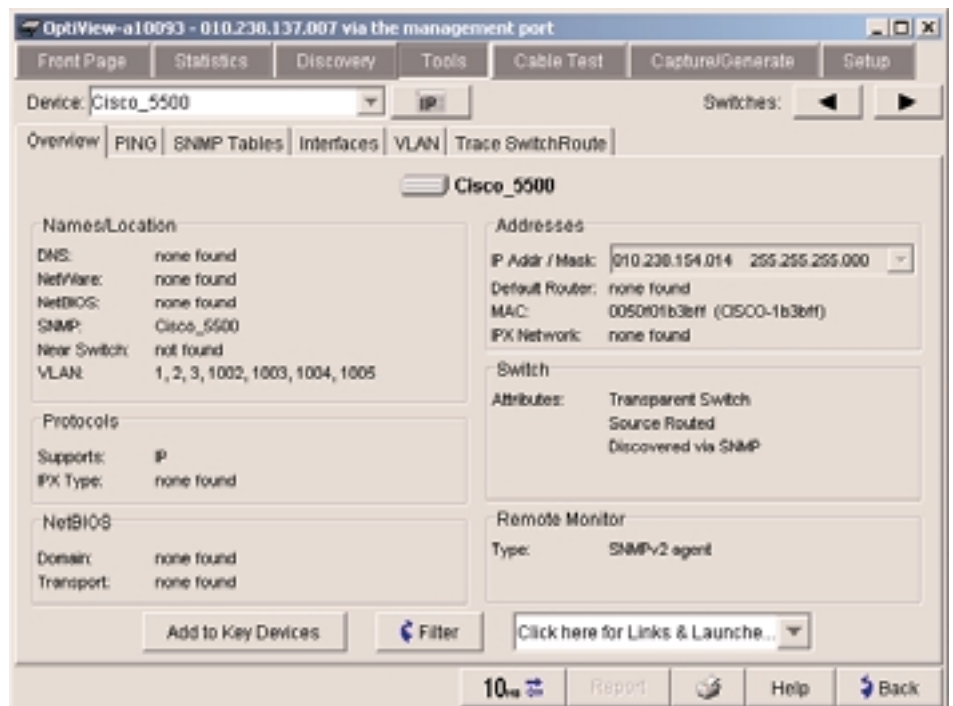


Figure 1. Switch overview.

For more detail on the VLANs, select the VLAN tab to display all information pertaining to the VLANs on the selected switch including VLAN number, description, subnet, VTP domain and interfaces on that switch belong to a specific VLAN. When the Interfaces mode is selected, the analyzer will display the switch interfaces configured as trunk ports and also indicate the trunk protocol in use on those ports.

To begin VLAN (or off net) device discovery, the address range to be discovered needs to be defined for the analyzer. Select the Setup Scope tab to enter the off net discovery scope.

Off net device discovery will start when the Broadcast Domain Only selection in the Device Discovery screen is unchecked, and all discovered devices will be displayed in the Discovery, Devices screen.

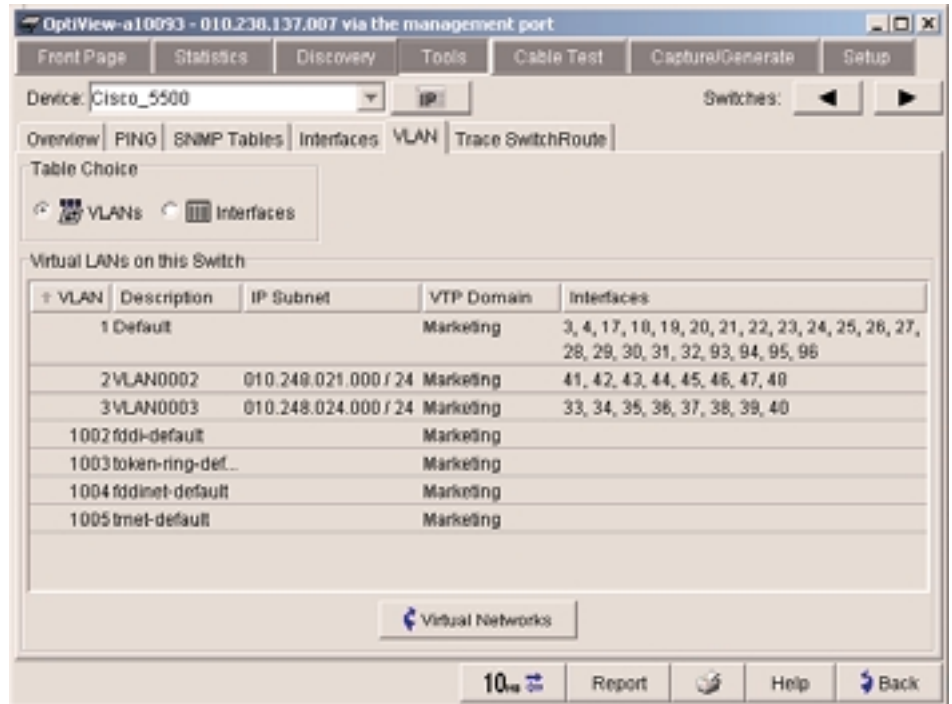


Figure 2. Switch VLAN detail.

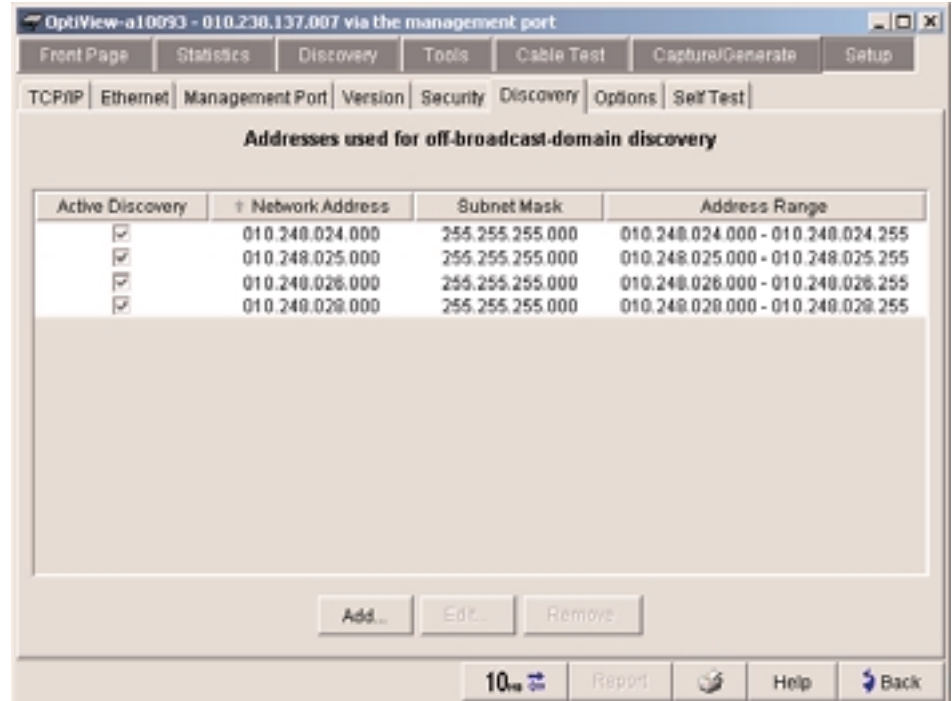


Figure 3. Off broadcast domain discovery scope.

VLAN information is also displayed in the Network Discovery screen where each switch belonging to the selected VLAN is displayed.

**Note:** Information displayed by the OptiView VLAN Vision Option is dependent on individual vendor's MIB implementations.

Under certain circumstances, dependent upon network infrastructure configuration, number of hosts, traffic levels and types of local and remote OptiView measurements invoked, the analyzer may exhibit some unusual behavior. If you experience any difficulties when using the VLAN Vision Option, please contact our Technical Assistance Center at **1-800-283-5853** (US and Canada); other countries **(425) 446-4519**. Or, find your local sales office at [www.flukenetworks.com/contact](http://www.flukenetworks.com/contact).

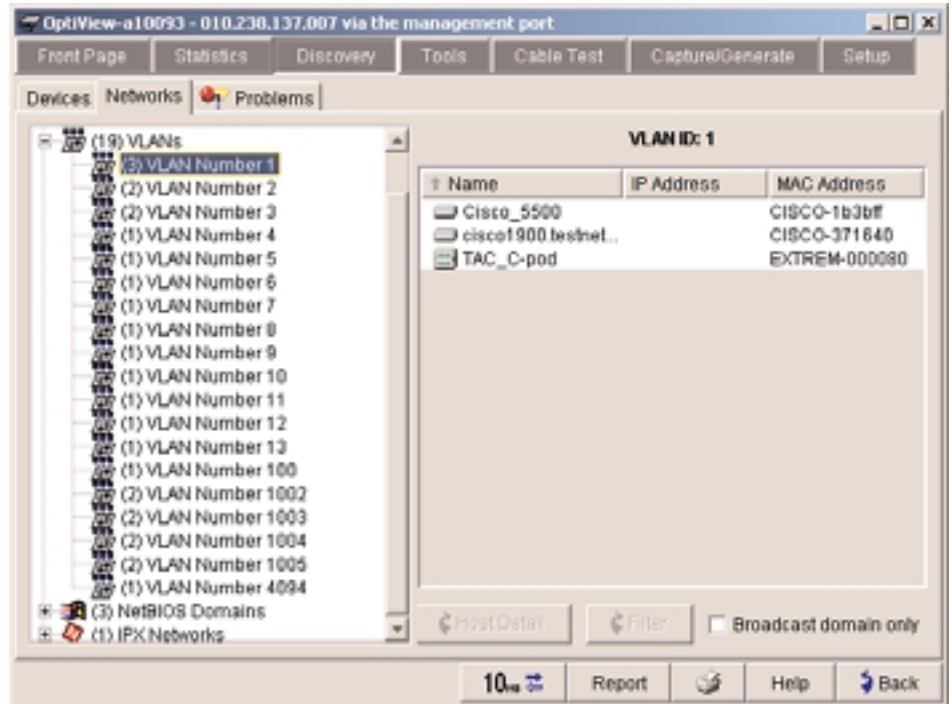


Figure 4. VLAN discovery.

## Ordering Information

Model	Description
OPV-VLAN	OptiView VLAN Vision Option (ordered with a new OptiView Mainframe)
OPV-VLAN/K	OptiView VLAN Vision Option (ordered as an upgrade to an existing unit)

### NETWORK SUPERVISION

**Fluke Networks**  
P.O. Box 777, Everett, WA USA 98206-0777

Fluke Networks operates in more than 50 countries worldwide. To find your local office contact details, go to [www.flukenetworks.com/contact](http://www.flukenetworks.com/contact).

©2003 Fluke Corporation. All rights reserved.  
Printed in U.S.A. 12/2003 2117008 D-ENG-N Rev B