

OptiView™

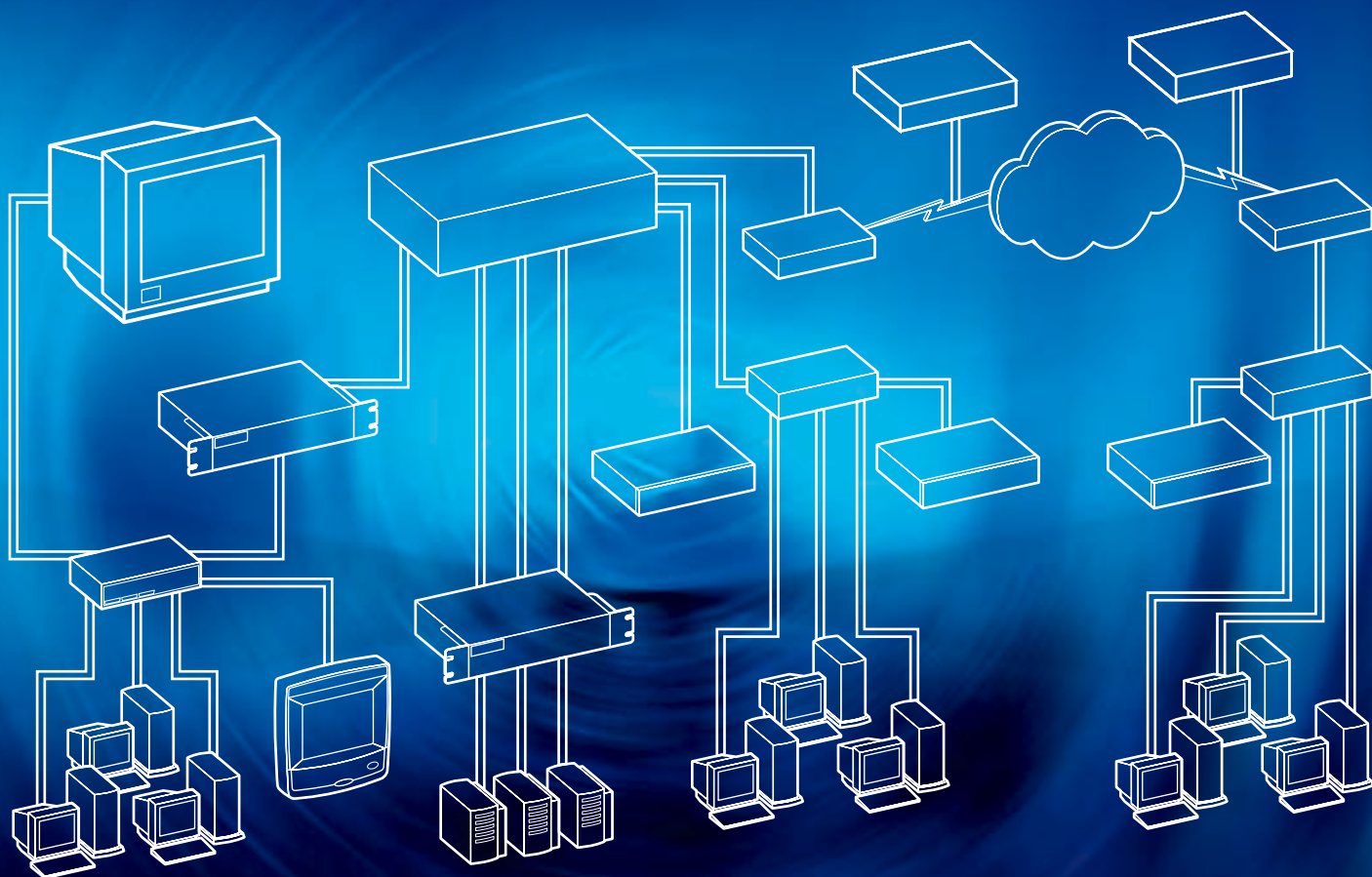
Network Analysis Solution

Total integration

Total control

Total Network SuperVision™

No one knows the value of an integrated solution better than network engineers—and Fluke Networks. Our OptiView Network Analysis Solution is a breakthrough in integrated portable and distributed monitoring hardware and software. It gives you quick, complete visibility into your entire network—from portable devices to workgroup analyzers to high-performance gigabit line-rate link analyzers to WAN analyzers.



OptiView provides an integrated platform for network analysis from one central console with full remote-access capability.

You can monitor the performance of every part of your network right from your desktop—with integrated features across the OptiView family that make troubleshooting faster and easier than ever before. The same intuitive interface features make it easy to use any part of the OptiView solution. And integrated hardware analyzers provide all the data you need to see in one unit. Just choose which part of the network you want to access; no need to open multiple applications or measurement agents.

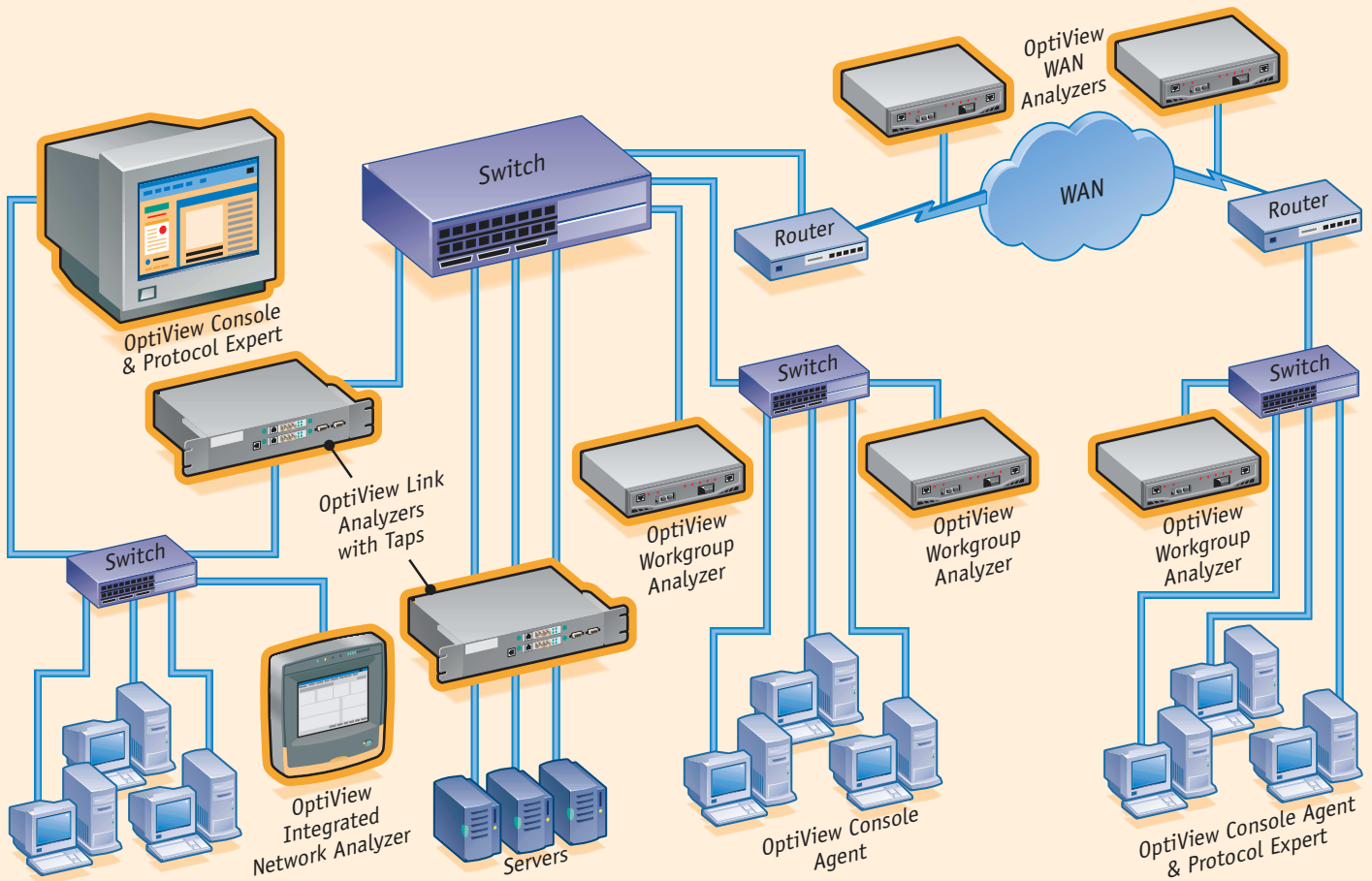
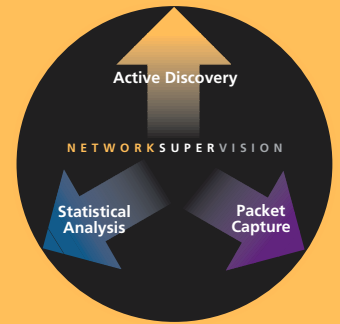
Whether you're at your desk or in the field, the entire OptiView solution is easy to learn and use—with minimal configuration. Its streamlined operation lets you quickly see and solve problems anywhere on your network—before they

can cause downtime or compromise performance. From lower training costs and higher productivity to optimum deployment of resources and easy scalability as your network grows, OptiView is designed to deliver a swift return on investment.

The OptiView Network Analysis Solution is the latest advance in Fluke Network SuperVision, our commitment to keeping you on top of your network with best-of-class products, services and support. Count on Fluke Networks for cost-effective, easy-to-use solutions that keep your network running at peak efficiency. Because when your network looks good, you look good.

Portable and distributed visibility. On all seven layers.

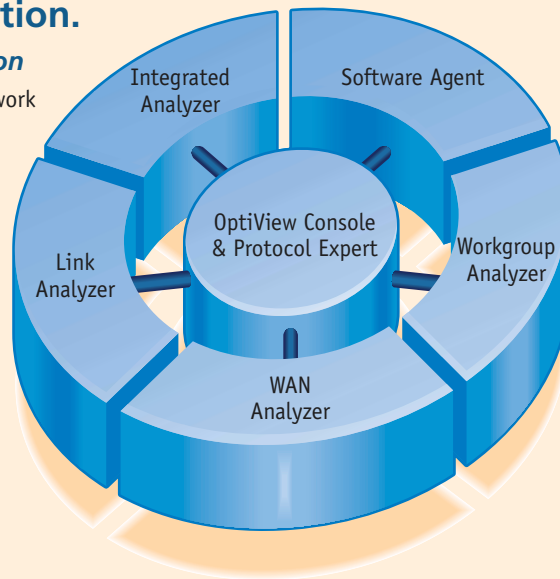
To understand what's happening in today's switched networks, the OptiView suite integrates three analysis techniques. **Active Discovery** provides inventory, mapping and path analysis. **Statistical Analysis** collects and analyzes information about network usage over time. **Packet Capture** gives you the in-depth visibility to solve application problems. It's what we call Network SuperVision.



OptiView™ Network Analysis Solution.

Integrated products deliver Network SuperVision

Two software products are at the core of the OptiView™ Network Analysis Solution. With data collected from remote analyzers and agents, OptiView Console generates reports and alerts network engineers to problems by email or pager. OptiView Protocol Expert provides in-depth analysis of capture files from the analyzers to uncover even the most difficult application and network problems.



- Analyzers and agents provide data for the **OptiView Console** and **Protocol Expert**.
- The **WorkGroup Analyzer** monitors, discovers and captures traces in local or remote switched workgroups and VLANs.
- The **OptiView Console** Agent, installed on remote PCs, can discover and monitor remote network segments.
- The **Integrated Analyzer** combines these capabilities into a portable package that can also provide data to the **OptiView Console** and **Protocol Expert**.
- **Link Analyzers** are optimized to capture traces from high-speed, critical links including full-duplex Gigabit.
- The **OptiView WAN Analyzers** provide vision into critical high speed WAN links.

OptiView Console.

Network monitoring software

OptiView's centralized operating console with remote access capability quickly discovers and continuously monitors network devices while documenting their connectivity. Using its software agents and OptiView Integrated Network Analyzer or Workgroup Analyzer, OptiView Console monitors the network and provides seven-layer information and documentation. With one look at the clearly organized data, you

can quickly identify whether the problem is on a switch, router, server or printer. Not in the office when something goes down? Schedule your OptiView Console to notify you by email or pager.



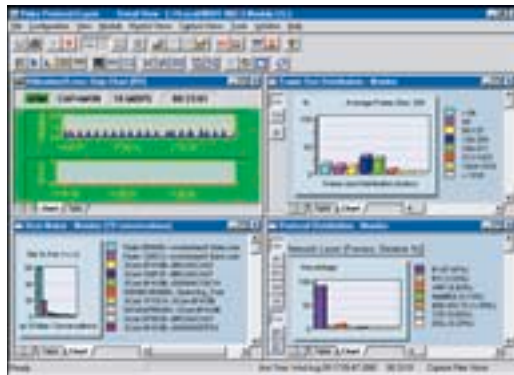
- Automatic discovery and data collection from OptiView Integrated Network Analyzer and OptiView Workgroup Analyzer.
- Discovers network devices quickly, with minimum configuration and no training.
- Shows device interface configuration including speed, type, MTU, slot and port.
- Continuously logs errors and changes on network devices for quick problem isolation.
- Generates web-based network inventory reports on devices, including DNS names, IP addresses and MAC addresses.
- Trends utilization, errors, broadcasts and collisions on all managed device ports. View the data in one-hour or 24-hour windows.

OptiView Protocol Expert.

Seven-layer distributed protocol analysis software

Protocol Expert is a Windows-based application that provides off-line protocol analysis for packets captured from OptiView's Workgroup Analyzer, Link Analyzer and Integrated Network Analyzer. It can even provide analysis directly through the network interface card in the PC on which it is running. Its expert

analysis feature pinpoints problems quickly and suggests corrective action. Extensive seven-layer decodes make it easy to identify and solve tough problems on switched segments.



- Complete seven-layer packet capture, decode and filtering capabilities.
- Allows off-line analysis of capture files from OptiView Workgroup, Link and Integrated Network Analyzers.
- Real-time monitoring of network traffic.
- Powerful alarms can be configured to trigger a capture session, and to send email or a paging notification.
- Sophisticated filtering system designed with switched networks in mind; peer-to-peer distributed monitoring approach lets network engineers collaborate while troubleshooting network problems and monitoring multiple network segments.
- Advanced options: Remote Control, Traffic Generator, Expert Analysis and VoIP.

OptiView Integrated Network Analyzer.

The only traveling diagnostic tool you need

Here's the ideal tool for traveling diagnostics. OptiView Integrated Network Analyzer incorporates all the features of the Workgroup Analyzer in a portable unit that's smaller than a laptop and battery powered for up to three hours. It combines a high performance protocol analyzer and cable tester together with integrated analysis features that make it quick and easy to detect problems.

reporting, monitoring and troubleshooting to your wireless network, you can have one view into every part of your network with just one analyzer.



One view into your wireless and wired networks

With OptiView's Wireless Analyzer option, you can analyze your airwaves like you analyze your wires. Now you can discover wireless clients and access points, validate security solutions and monitor radio channels. By bringing the same level of

- Transforms the ordinary start-up screen into an information-rich Network Front Page that simultaneously displays the results of multiple advanced network functions.
- User interface is identical to the OptiView Workgroup Analyzer for quick, easy use.
- Capture performance data with optional reporting and monitoring packages: OptiView Reporter Software and the OptiView Console.
- Optional WAN Vision Suite for visibility into ATM, T1/E1, T3, ISDN and SONET interface.
- Wireless option makes it the only tool that provides 10/100/1000 Mbps wireless visibility.
- Optional VLAN Vision supports off broadcast domain discovery.

OptiView Workgroup Analyzer.

A revolution in distributed monitoring and analysis

The OptiView Workgroup Analyzer is designed for integrated use with OptiView Console and Protocol Expert so you can monitor and analyze 10/100/1000 Ethernet networks right from your desktop.

Locate Workgroup Analyzer at the same site or at a remote site literally anywhere in the world to gain a “virtual” presence for analysis and troubleshooting of any segment

of the enterprise network. With minimal preconfiguration, no network experience is required to install at remote sites.

Its out-of-band 10/100 Mbps management port allows up to eight remote sessions to simultaneously conduct network monitoring through direct connection to a switch port or to a non-blocking SPAN/mirror port.



- Expert automation, providing seven-layer network information at a glance.
- Advanced active discovery, even in switched environments.
- Remote packet capture capability.
- Upload packet capture files for local analysis with OptiView Protocol Expert.
- Upload database into OptiView Console to generate Microsoft® Visio network maps of remote sites.
- SNMP trap capability.
- VLAN Vision option.

OptiView Link Analyzer.

Distributed protocol analyzer platform

This compact system works with OptiView Protocol Expert software to provide real-time traffic monitoring and high-performance packet capture for critical Ethernet

links. Dual-measurement ports work with fault tolerant inline taps to monitor and capture traffic on full-duplex links that have high utilization.



- Supports 10/100 Mbps and Gigabit Ethernet.
- Powerful line-rate capture and monitoring; captures every frame on an Ethernet segment at 10/100/1000 Mbps capacity.
- Large capture buffer.
- Sophisticated filtering and triggering features.
- Remote management from any point on the network—without interfering with the traffic being monitored.

OptiView WAN Analyzer.

The complete solution for monitoring critical WAN links

Designed for integrated use with OptiView Console and Protocol Expert, the OptiView WAN Analyzer allows you to remotely evaluate the status of your expensive WAN links from the physical to the application layer. With virtually no configuration required, the OptiView WAN Analyzer measures link parameters to provide an immediate comprehensive front page performance view of high-speed WAN links. Combined with RMON2 traffic analysis capabilities, packet capture, and easy-to-use remote

interface, the OptiView WAN Analyzer provides a complete solution for performance monitoring and troubleshooting critical WAN links.



- Supports high-speed OC3/STM-1 and OC12/STM-4 optical interfaces.
- ATM and Packet over SONET/SDH technologies.
- Advanced network discovery with address to name resolution.
- Real time problem detection and notification.
- Bandwidth utilization statistics including top applications, conversations and protocols.
- Standards based SNMP and RMON2 compatibility interoperates with existing network management systems.

You're covered with Gold SuperVision Support

Optimize your Fluke Networks products with the best in support while protecting against downtime and obsolescence. Experience a privileged level of entitlement and assistance. Order Gold SuperVision Support now by calling 1-800-553-5853 in the USA or Canada, or 00 800 632 632 00, or +44 1923 281 300 in Europe. In all other locations, contact your local authorized Fluke Networks representative for pricing and availability.



Total solutions for your front-line, too

WaveRunner™ Wireless LAN Tester

Superior visibility to manage your wireless networks



LinkRunner™ Network Multimeter

Personal tool for verifying connectivity and availability



NetTool™ Network Tester

The world's only Inline network tester for PC connectivity



OneTouch™ Series II Network Assistant

The fastest network troubleshooter for switched Ethernet LANs



DSP-4300 CableAnalyzer™

The most specified test solution on the market



See what you've been missing

Take a look at what a difference the OptiView Network Analysis Solution can make to your network's performance. For a free network evaluation and demonstration on your own network, call us at 1-800-283-5853 (U.S. and Canada) or 425-446-4519. A Fluke Network Systems Engineer will assess your network on-site and show you how to bring the latest advances in integrated network analysis to your own environment. For more information, visit Fluke Networks at www.flukenetworks.com.

NETWORK SUPERVISION

Fluke Networks
P.O. Box 777, Everett, WA USA 98206-0777

Fluke Networks operates in more than 50 countries worldwide. To find your local office contact details, go to www.flukenetworks.com/contact.

©2003 Fluke Corporation. All rights reserved.
Printed in U.S.A. 10/2003 1629065 B-ENG-N Rev C