



JackRapid™ Punchdown Tool

Introducing JackRapid™ – the industry’s most innovative and time saving installation punchdown tool is now part of Fluke Networks’ line of network installation and test solutions. JackRapid allows you to terminate jacks eight times faster than traditional impact tools – with accuracy that’s unmatched. The patented jack termination tool seats and terminates all wires simultaneously with one squeeze of the handle. With JackRapid, you’ll never punch into the palm of your hand or through drywall again.

High-quality terminations

- Built-in bed helps hold jack in place
- Eliminates error during terminations
- No more compromised connections and wasted jacks

Cuts installation time

- Easy-to-use handle, seats and cuts all wires at once
- Increases productivity – install jacks 8 times faster

Simple, one-handed operation

- Reduce hand fatigue – one squeeze terminates all pairs!
- Virtually error-free terminations

Future proof



- Replaceable blade heads for use with multiple jack types. Additional blade heads are in development.

Wall-friendly

- Unique design easily accommodates close-to-wall installations no slack, no problem!



Ordering Information

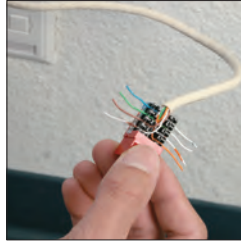
	Description	Model Number
	JackRapid with Leviton Blade Supports the following Leviton jacks: 41106, 41108 (Cat 3/5), 5G108 (Cat 5e)	10059600
	Leviton Replacement Blade Head only	10059601
	JackRapid with Systimax/Uniprise Blade Supports the following Systimax jacks: M1BH (Cat 3), C5 (Cat 5), MPS100E (Cat 5e) and the following Uniprise jacks: UNJ300 (Cat 3), UNJ500 (Cat 5e), UNJ600 (Cat 6)	10059630
	Systimax/Uniprise Replacement Blade Head only	10059603



Perfect terminations are easy with JackRapid



1. Strip cable jacket.



2. Determine wiring scheme.
Dress all 4 pairs (8 wires).



3. Insert jack in JackRapid
front first with IDC slots
facing blades of JackRapid.



4. Ensure jack is completely
and securely inserted in
jack holder bed with IDC
slots facing the blades.



5. Pull trigger completely
and remove excess wire
prior to releasing trigger.



6. Wires will be seated and
cut for a solid termination.



7. Release handle and remove jack
from JackRapid tool. Visually
verify proper termination.

Interchangeable blade heads for use with various jacks



1. Make sure handle is in
open position.
Push handle and blade
toward each other.



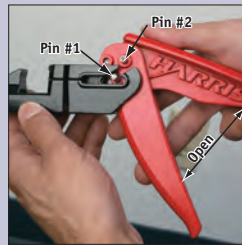
2. Angle handle so that pin
2 will slide out first.
Then slide out pin # 1.



3. You have successfully
removed the blade head.



1. Open tool handle and
move lever to pin #1
"down" position.



2. Angle handle, and insert
pin one into blade head
first. Be sure to keep tool
handle in open position.



3. Make sure handle is open.
Once pin #1 has been
inserted, slide pin #2 into
blade head.

NETWORK SUPERVISION

Fluke Corporation
P.O. Box 777, Everett, WA USA 98206-0777

Fluke Networks operates in more than 50 countries
worldwide. To find your local office contact details,
go to www.flukenetworks.com/contact.

©2005 Fluke Corporation. All rights reserved.
Printed in U.S.A. 5/2005 2447816 D-ENG-N Rev B